

NATURAL-X

BRICK CLADDING SYSTEM



SYSTEM GUIDE



NATUR/L-X

NATURAL-X

RESPONDING TO CHANGING NEEDS AND EVOLVING CONSTRUCTION METHODOLOGIES, NATURAL-X IS THE LATEST INNOVATION FROM ASH & LACY.

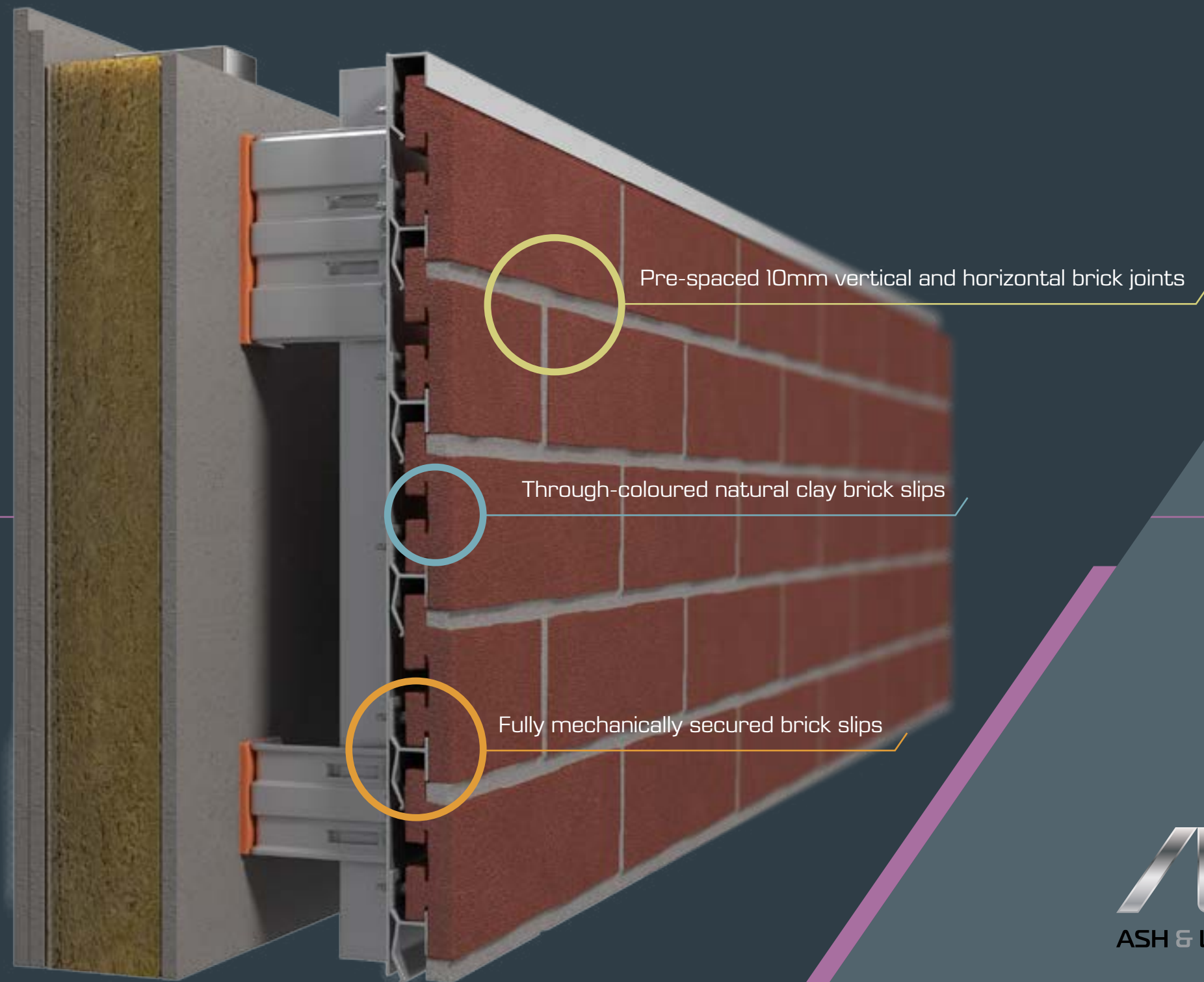
WELCOME TO
NATURAL-X

SYSTEM DESCRIPTION

A lightweight, mechanically fixed, non-combustible cladding system delivering all the benefits of natural clay brick, NaturAL-X also provides substantial cost savings compared to similar systems. Featuring unique clay brick slips and 6063T6 grade aluminium support rails, the system is available in a wide range of colours and textures. Whilst delivering advantages associated with rainscreen cladding, including reduced installation times and associated costs, it realises a truly desirable finish. including reduced installation times and associated costs, it realises a truly desirable finish with the peace of mind of A1 classification to EN 13501-1 and BBA certification.

4-5	Key Features
6-7	Key Benefits
8-9	Components
10-11	Support Systems
12-13	Installation
14-17	Finishes
18-24	Technical
25	Contact
26-27	Projects





ASH & LACY

NATUR/L-X

NATURAL-X

Delivering the aesthetic appeal of organic clay brick, NaturAL-X combines this with the financial savings, reduction in structural load and rapid installation capabilities associated with a lightweight mechanically fixed system. It also exceeds the rigorous testing standards developed by the CWCT and carries full BBA certification.

MORE THAN JUST
A PERFECT FINISH

NaturAL-X eliminates the weather dependency of traditional methodologies too, whilst still providing a wide range of brick colours and textures.

KEY FEATURES

Fully mechanically secured brick slips

Pre-spaced mortar joints

BBA Certified

Fire tested: Classified A1 to EN 13501-1

Tough and lightweight 6063T6 grade aluminium

Compatible with a range of construction methodologies



DURABLE

Delivers the colour-fast stability and natural weathering behaviour of a traditional clay brick finish.

PREDICTABLE

Makes programming easier by eliminating the uncertainties associated with weather dependent processes.

FASTER

Easy to install, minimising time on site and the associated labour costs.

SIMPLER

Ideal for installation using aerial work platforms, minimising the need for scaffolding.



NATUR/L-X

NATURAL-X

Ash & Lacy has a reputation for innovation, realising products that leverage technology, creating opportunity and delivering competitive advantage. NaturAL-X represents substantial progress in the development of mechanically fixed cladding systems, providing benefits that expand the scope of design and construction for a diverse range of projects.

CREATING NEW OPPORTUNITIES

20% CHEAPER

Provides cost savings of up to twenty percent, compared with similar systems.

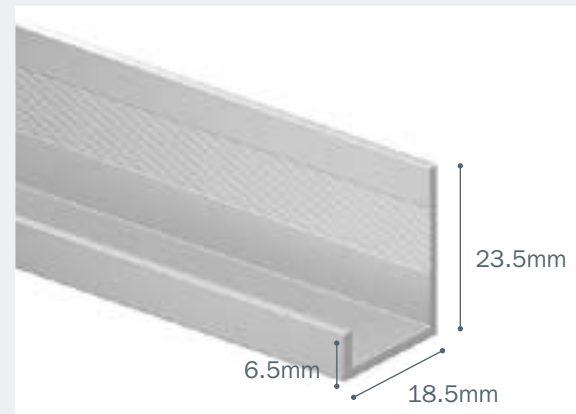
50% LIGHTER

Over fifty percent lighter than traditional masonry, reducing structural load.

100% FIRE TESTED

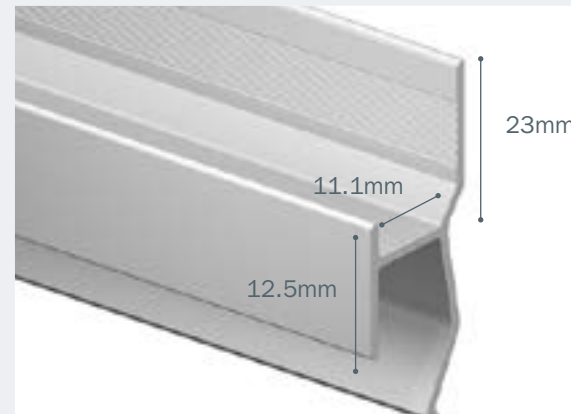
NaturAL-X has been rigorously externally tested and is classified A1 to EN13501-1 standards, giving you the peace of mind of a non-combustible cladding solution.

> STARTER RAIL



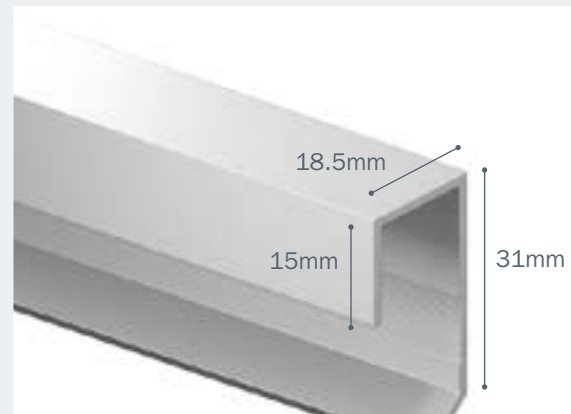
Available in 3m lengths.

> MIDDLE RAIL



Available in 3m lengths.

> TOP RAIL



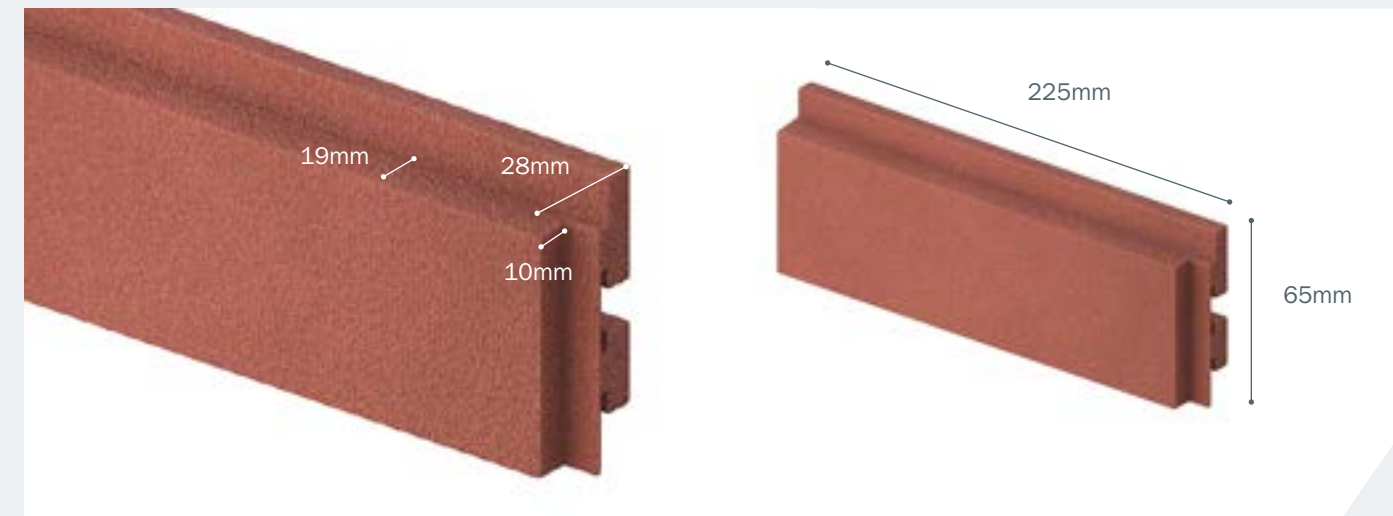
Available in 2m lengths.

NATUR/L-X

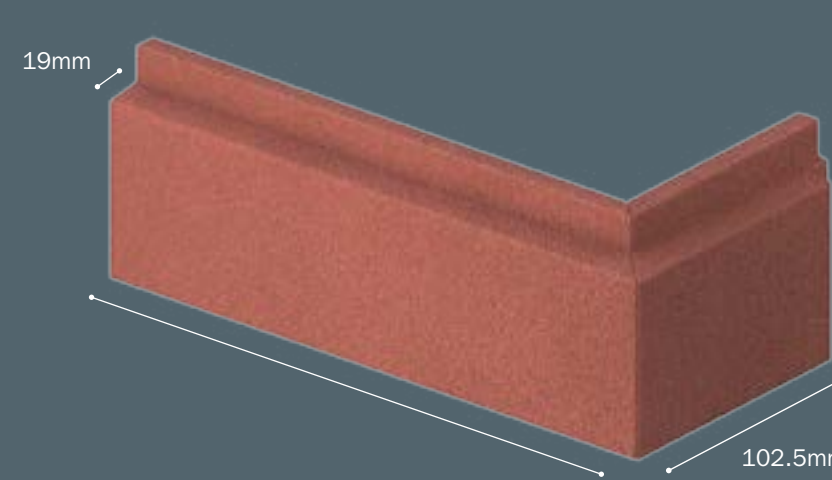
All the benefits of NaturAL-X are delivered through five dedicated components, a starter, middle and top rail, all extruded from tough, lightweight 6063T6 grade aluminium, plus natural clay facing and corner brick tiles. Together, these can be fixed seamlessly to Ash & Lacy's innovative range of AxiAL rainscreen support systems, making the entire design and installation process simple, from concept to completion.

NATURAL-X

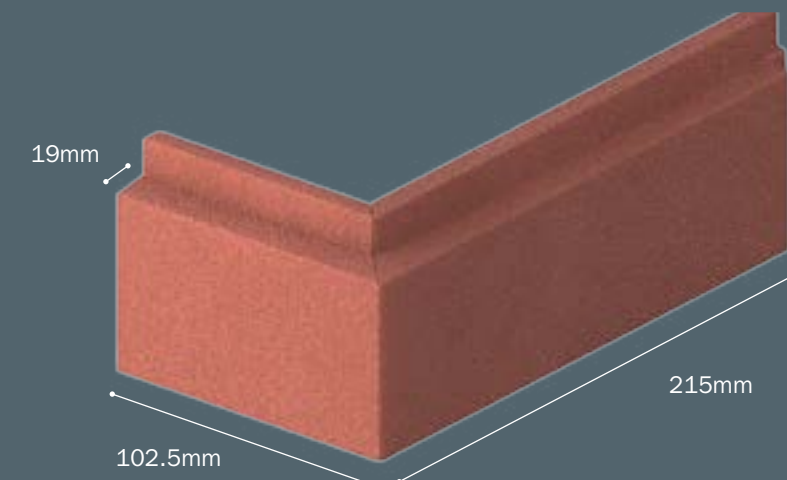
COMPONENTS



> BRICK



> BRICK CORNER - right hand



> BRICK CORNER - left hand

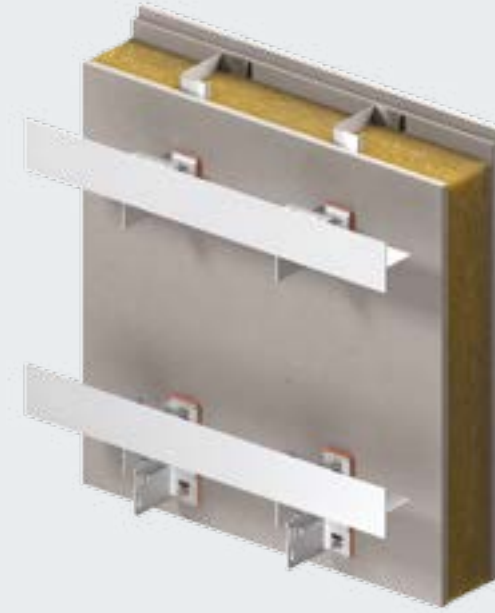
> AX1

Aluminium support system suitable for mechanical fixing of cladding elements by means of rivet or screw, with rails used in vertical application



> AX2

Aluminium support system suitable for mechanical fixing of cladding elements by means of rivet or screw, with rails used in horizontal application.



< AX3

Aluminium support system suitable for mechanical fixing of horizontal and vertical application cassette panels.



< AX4

Aluminium support system suitable for rainscreen with a shallow cladding zone and no adjustability requirement.



AXIAL

NATURAL-X

AxiAL Rainscreen Support Systems are designed to deliver exceptional standards for both new-build and refurbishment projects. Specially engineered to provide a superior level of thermal performance, designers have the reassurance of knowing they meet the highest environmental requirements, while ease of installation and reduced build time help to significantly lower costs.

SUPPORT SYSTEMS

GUARANTEED

Reassurance of a 10 year warranty, or 25 year warranty when used with an Ash & Lacy rainscreen panel system.

INTEGRAL
10 YEAR WARRANTY ASH & LACY

TESTED

AxiAL Rainscreen Support Systems are classified A1 to EN 13501-1 and are tested in conjunction with a wide range of facade materials to EN 13823 and EN 1716 standards, so you can specify AxiAL with complete confidence in its performance against fire.

COST EFFECTIVE

All alloys exceed performance test requirements, yet deliver significant savings (with aluminium brackets using 30% less raw material compared with flat extrusions).

ASH & LACY



> STEP 1



> STEP 2



> STEP 3



> STEP 4



> STEP 5



NATUR/L-X

Working with NaturAL-X delivers advantages from day one, starting with its lightweight construction decreasing the demand on foundations and reducing associated construction costs. The system is fully compatible with an extensive range of building substrates too, making it ideal for enhancing concrete, steel frame, masonry and insulated panels. Installation is also fast and simple, providing time and cost saving advantages over traditional brickwork, whilst realising its undeniable aesthetic appeal.

NATURAL-X

INSTALLATION

STEP 1. Mechanically fix NaturAL-X vertical support rails to the building substructure at 600mm maximum centres.

STEP 2. Horizontally affix middle rails to the vertical supports at 75mm increments, including a starter and top rail in their respective locations.

STEP 3. Slip NaturAL-X brick tiles firmly into place, guided by the preformed upper and lower retainers.

STEP 4. NaturAL-X brick tiles have an integrated rebate, consistently setting the vertical perp joint at 10mm. The corresponding 10mm horizontal bed joint is instantly created by the profiled top lip of the adjacent brick tile.

STEP 5. So, when installation is complete, simply injection point these joints with Parex Historic mortar to realise a classic clay brick finish.



NATUR/L-X

NATURAL-X

NaturAL-X is available in a range of over 20 standard colours, complimented by a variety of textures and surface finishes, with glazed and bespoke blends also available on request.

For further information on our SIMPLICITY and CREATIVITY ranges, or to request samples, please contact us:
bricks@ashandlacy.com

RELEASING YOUR CREATIVITY

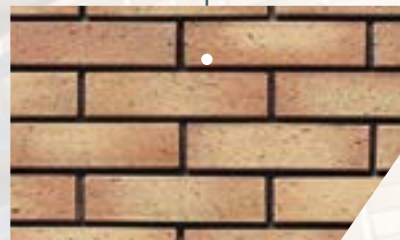
> SIMPLICITY RANGE



Code: D802C



Code: D1023



Code: SD203



Code: D204



Code: D702



Code: 1001 Name: Hartland

Choose your
COLOUR

Choose your
TEXTURE

Additional colours and textures are available within the SIMPLICITY and CREATIVITY ranges.

To request images or samples, please contact
bricks@ashandlacy.com

› CREATIVITY RANGE – RED / PURPLE



Code: 1001 Name: Hartland



Code: 1003 Name: Babbacombe



Code: 1005 Name: Lulworth



Code: 1007 Name: Newhaven



Code: 1002 Name: Polzeath



Code: 1004 Name: Hive



Code: 1006 Name: Calshot

› CREATIVITY RANGE – BUFF / YELLOW



Code: 2001 Name: Compton



Code: 2003 Name: Whitby



Code: 2005 Name: Whitecliff



Code: 2002 Name: Totland



Code: 2004 Name: Seaton



› CREATIVITY RANGE – GREY



Code: 3001 Name: Rhossili



Code: 3002 Name: Broadhaven



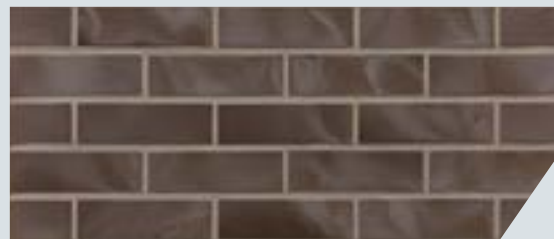
Code: 3003 Name: Caswell

› GLAZED



Code: N/A Name: Glazed White
More colours available on request

› CREATIVITY RANGE – BLUE / BROWN / BLACK



Code: 4001 Name: Arbroath



Code: 4003 Name: Stonehaven



Code: 4002 Name: Lossiemouth



Code: 4004 Name: Porthluney

FINISHES

Additional colours and textures are available within the CREATIVITY range.

To request images or samples, please contact bricks@ashandlacy.com

System Properties	RESULT
-------------------	--------

System weight	58kg/m²
Resistance to wind loading	2.4kN/m²

Brick Properties	TEST METHOD	RESULT
------------------	-------------	--------

Frost resistance	EN ISO 10545-12:1997	Fully resistant
Water absorption	EN ISO 10545-3:1995	6.40%
Breaking strength	EN ISO 10545-4:2014	345N
Thermal expansion	EN ISO 10545-8:2004	4.6 x 10-6°C
Reaction to fire	EN 13501-1	Euroclass A1

Brick Criteria	RESULT
----------------	--------

Standard brick face dimensions	215mm x 65mm
Corner brick face dimensions	102 x 215 x 65mm
Brick thickness	28mm

Design Criteria	TEST METHOD
-----------------	-------------

Maximum vertical support centres	600mm
Maximum bracket centres	600mm
Brick rail length	3000mm
Top rail length	3000mm
Starter rail length	3000mm
Bracket adjustment range	40mm - 300mm
Movement joints	Maximum 6m
Building substrates	Masonry, Concrete, SFS



> DOWNLOAD CWCT TEST REPORT



> DOWNLOAD CERTIFICATE

NATURAL-X

NATURAL-X

Ash & Lacy products are backed by a knowledgeable and experienced technical team. Available from 9:00am until 5:00pm Monday to Friday, they will be pleased to provide expert help and advice.

TECHNICAL

This extends to offering complete through-wall design advice and technical support, covering our lightweight steel framing, rainscreen cladding and interfacing with window design.

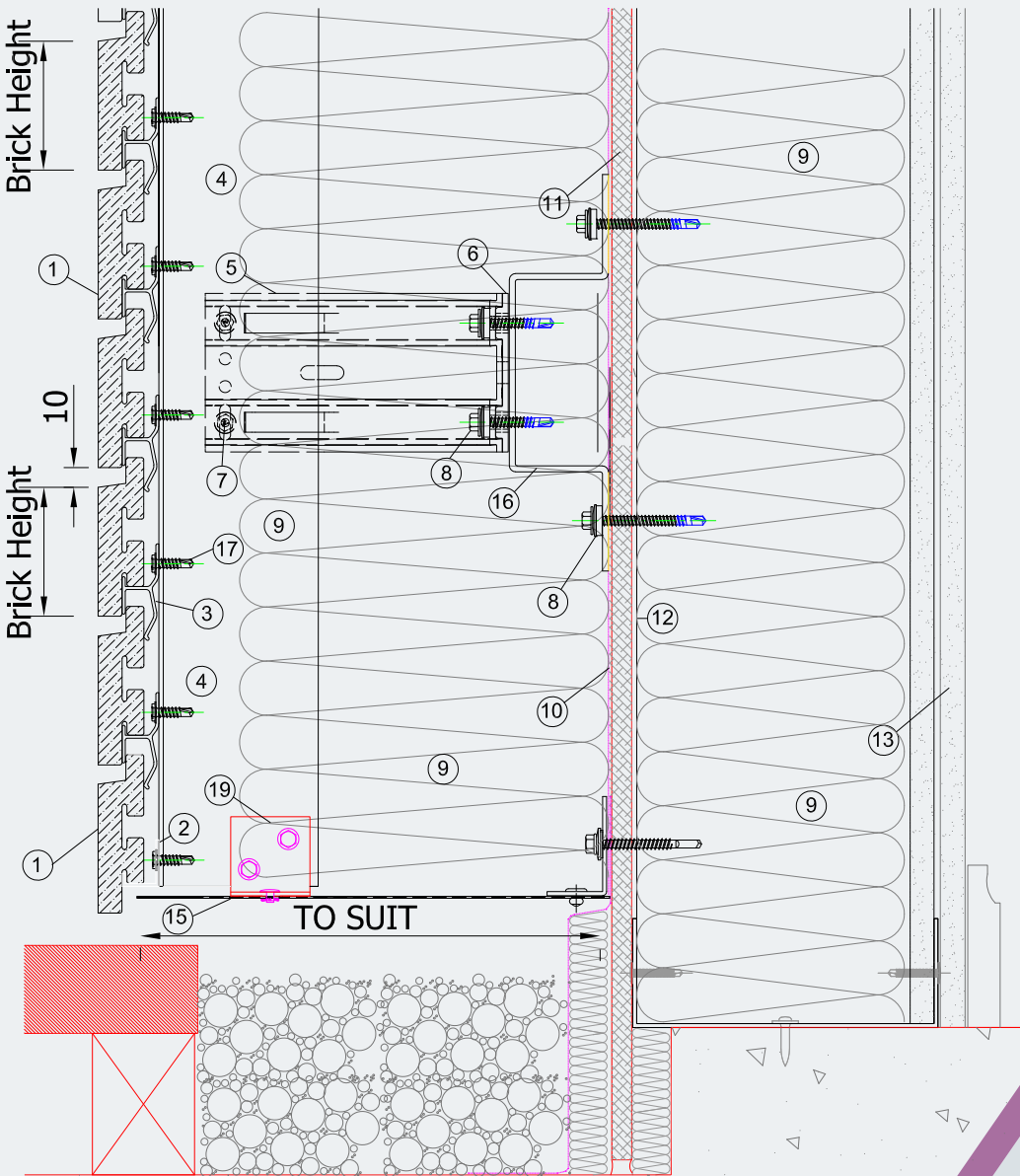
Detailed CAD and PDF files can also be supplied for specific requirements. Together, these services deliver comprehensive support for all the secondary elements of building façades.



> NX BASE JUNCTION

- ① NaturAL Brick
- ② Starter Rail
- ③ Brick Rail
- ④ Mullion
- ⑤ Wall Bracket
- ⑥ Thermal Pad
- ⑦ Bracket/Mullion Fix
- ⑧ Bracket/Wall Fix
- ⑨ Insulation
- ⑩ Membrane
- ⑪ Cementitious Board
- ⑫ A&L Steel Frame
- ⑬ Internal Finishes
- ⑭ Top Rail
- ⑮ Ventilated Section
- ⑯ Horizontal Rail
- ⑰ Rail/Mullion Fix
- ⑱ Reinforcement Angle
- ⑲ Cleat
- ⑳ Flashing

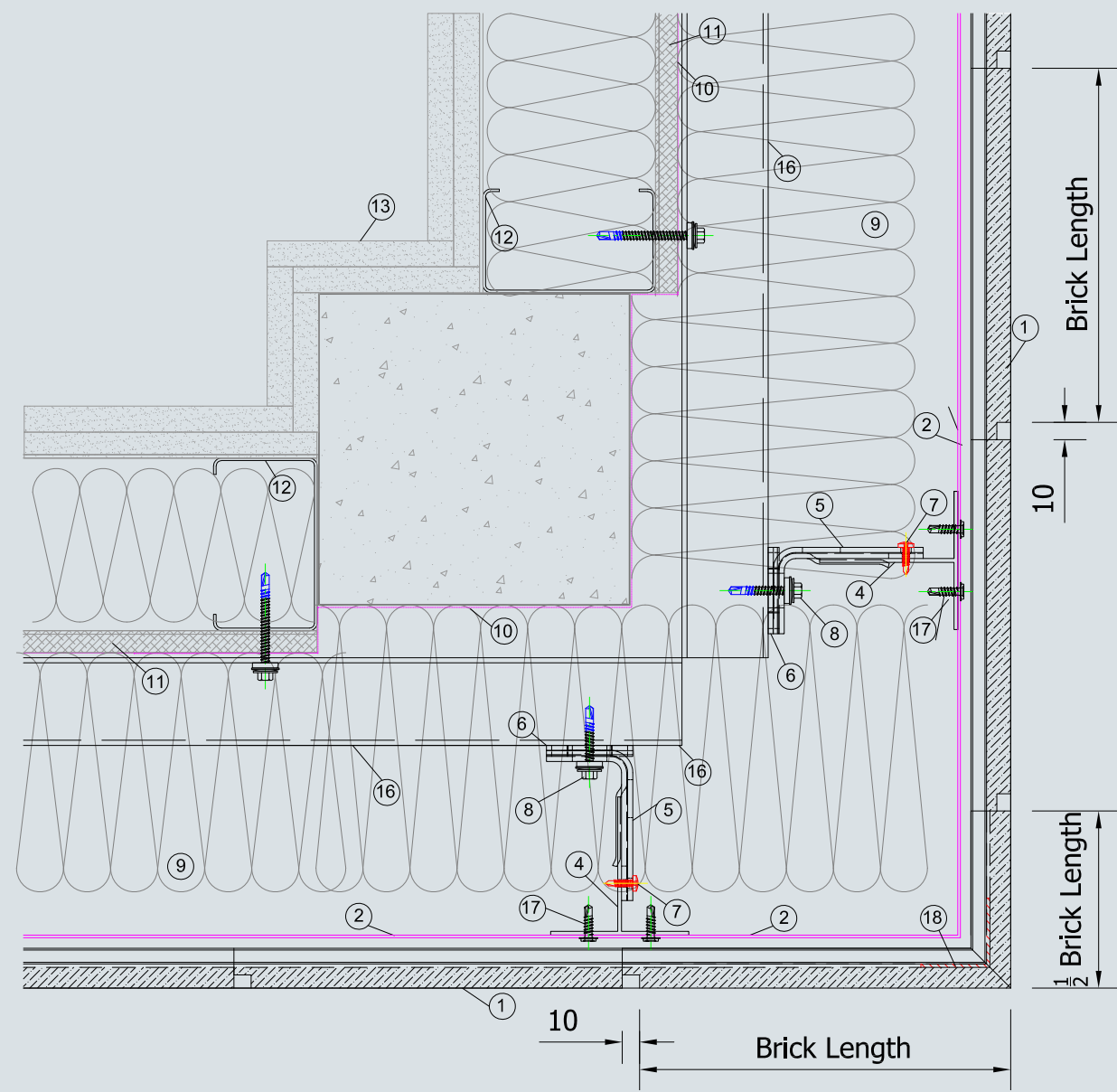
Note: All fixings, insulation and membranes indicated are for guidance only and need to be checked for each individual project.



> NX EXTERNAL CORNER

- ① NaturAL Brick
- ② Starter Rail
- ③ Brick Rail
- ④ Mullion
- ⑤ Wall Bracket
- ⑥ Thermal Pad
- ⑦ Bracket/Mullion Fix
- ⑧ Bracket/Wall Fix
- ⑨ Insulation
- ⑩ Membrane
- ⑪ Cementitious Board
- ⑫ A&L Steel Frame
- ⑬ Internal Finishes
- ⑭ Top Rail
- ⑮ Ventilated Section
- ⑯ Horizontal Rail
- ⑰ Rail/Mullion Fix
- ⑱ Reinforcement Angle
- ⑲ Cleat
- ⑳ Flashing

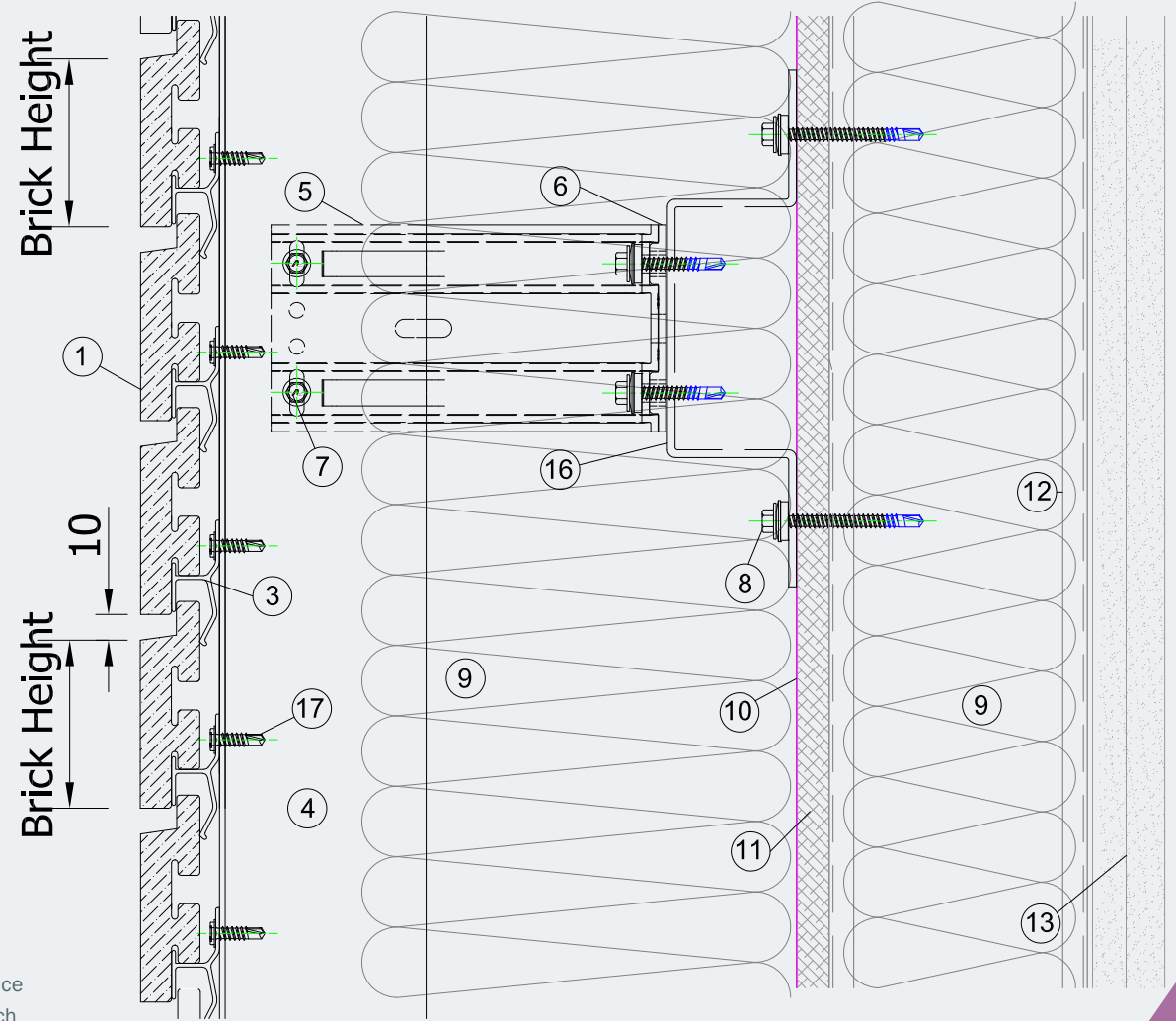
Note: All fixings, insulation and membranes indicated are for guidance only and need to be checked for each individual project.



> NX HORIZONTAL JOINT

- 1 NaturAL Brick
- 2 Starter Rail
- 3 Brick Rail
- 4 Mullion
- 5 Wall Bracket
- 6 Thermal Pad
- 7 Bracket/Mullion Fix
- 8 Bracket/Wall Fix
- 9 Insulation
- 10 Membrane
- 11 Cementitious Board
- 12 A&L Steel Frame
- 13 Internal Finishes
- 14 Top Rail
- 15 Ventilated Section
- 16 Horizontal Rail
- 17 Rail/Mullion Fix
- 18 Reinforcement Angle
- 19 Cleat
- 20 Flashing

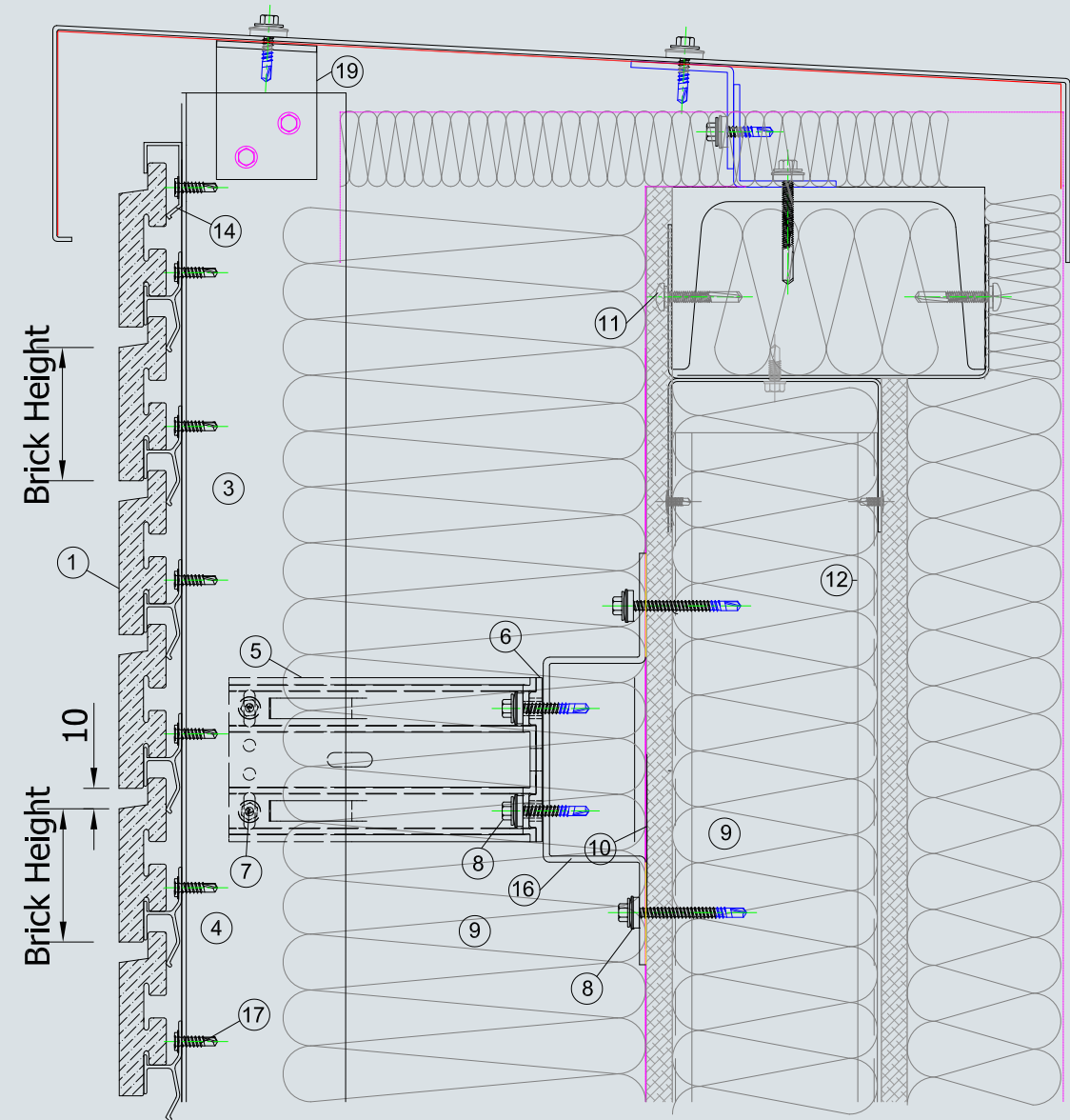
Note: All fixings, insulation and membranes indicated are for guidance only and need to be checked for each individual project.



> NX PARAPET JUNCTION

- 1 NaturAL Brick
- 2 Starter Rail
- 3 Brick Rail
- 4 Mullion
- 5 Wall Bracket
- 6 Thermal Pad
- 7 Bracket/Mullion Fix
- 8 Bracket/Wall Fix
- 9 Insulation
- 10 Membrane
- 11 Cementitious Board
- 12 A&L Steel Frame
- 13 Internal Finishes
- 14 Top Rail
- 15 Ventilated Section
- 16 Horizontal Rail
- 17 Rail/Mullion Fix
- 18 Reinforcement Angle
- 19 Cleat
- 20 Flashing

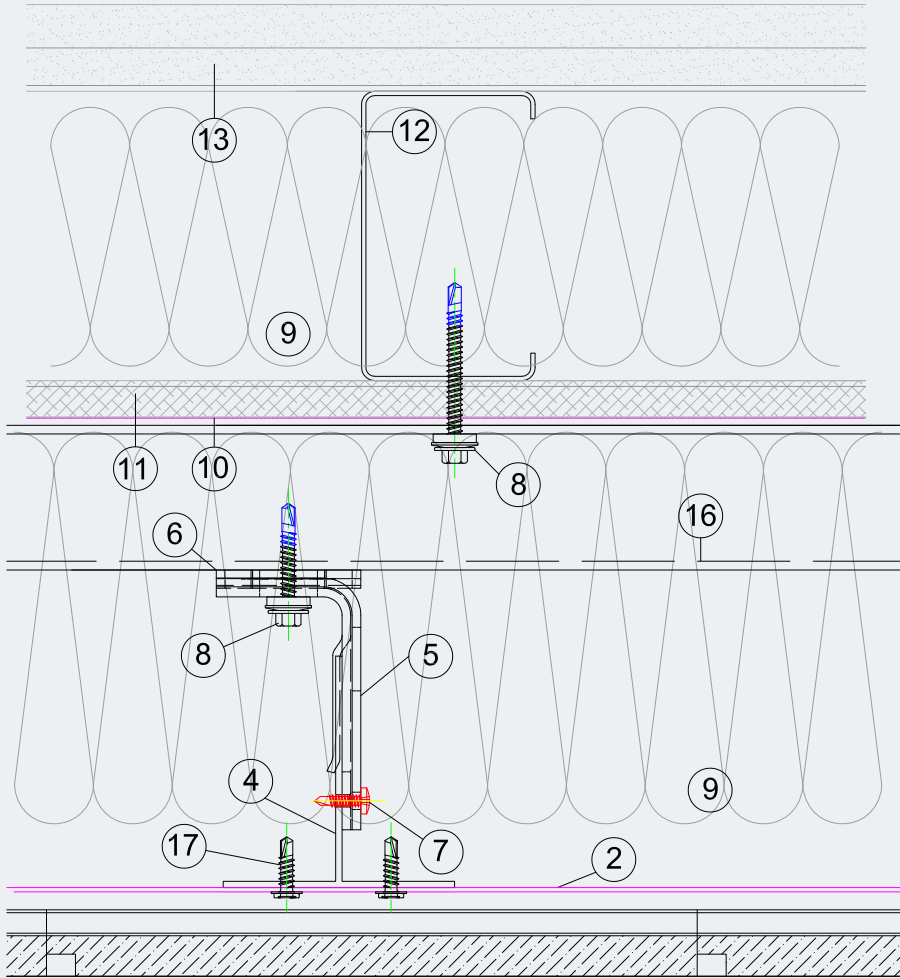
Note: All fixings, insulation and membranes indicated are for guidance only and need to be checked for each individual project.



> NX VERTICAL JOINT

- ① NaturAL Brick
- ② Starter Rail
- ③ Brick Rail
- ④ Mullion
- ⑤ Wall Bracket
- ⑥ Thermal Pad
- ⑦ Bracket/Mullion Fix
- ⑧ Bracket/Wall Fix
- ⑨ Insulation
- ⑩ Membrane
- ⑪ Cementitious Board
- ⑫ A&L Steel Frame
- ⑬ Internal Finishes
- ⑭ Top Rail
- ⑮ Ventilated Section
- ⑯ Horizontal Rail
- ⑰ Rail/Mullion Fix
- ⑱ Reinforcement Angle
- ⑲ Cleat
- ⑳ Flashing

Note: All fixings, insulation and membranes indicated are for guidance only and need to be checked for each individual project.



NATUR/L-X

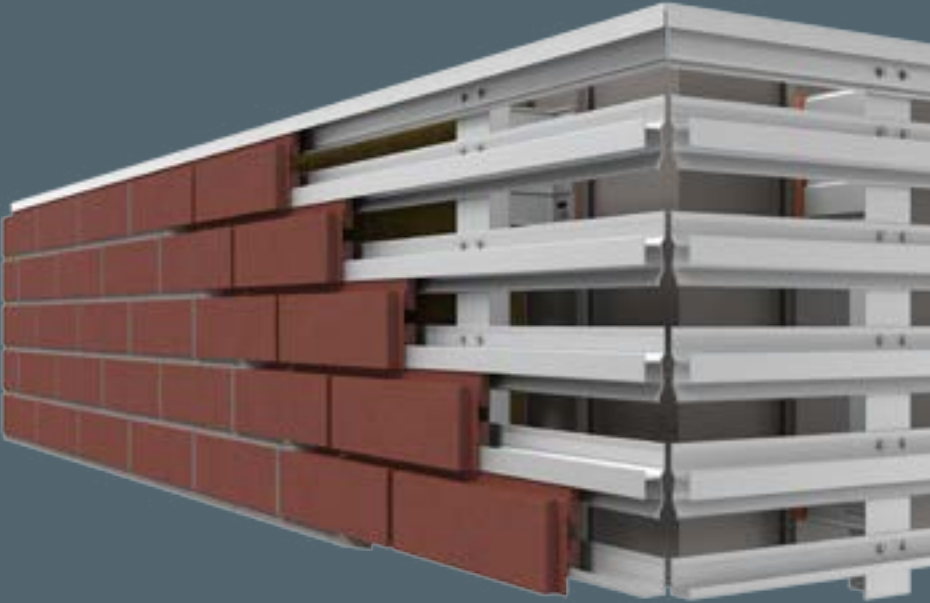
NATURAL-X

Are you keen to experience the substantial benefits NaturAL-X provides? Then our dedicated sales and technical teams are here to help. So, simply contact your local Ash & Lacy representative today. bricks@ashandlacy.com

DISCOVER MORE

Ash and Lacy Building Systems Ltd
Bromford Lane
West Bromwich
West Midlands B70 7JJ
T 0121 525 1444
F 0121 525 3444
E sales@ashandlacy.com

www.ashandlacy.com



HEAD OFFICE

Bromford Lane, West Bromwich
West Midlands B70 7JJ
T 0121 525 1444
F 0121 525 3444
E sales@ashandlacy.com

LONDON

Unit A, Davis Road Ind Park, Off Cox Lane
Chessington, Surrey KT9 1TD
T 0208 391 9700
F 0208 391 9701
E london@ashandlacy.com

GLASGOW

Unit 4B, Albion Trad Est, South Street
Glasgow G14 0SY
T 0141 950 6040
F 0141 950 6080
E glasgow@ashandlacy.com

EXETER

Units 2&3 Gloucester Court
Heathpark Ind Est Honiton
Devon EX14 1SJ
T 01404 549100
F 01404 549440
E devon@ashandlacy.com

SMETHWICK

Alma Street
Smethwick B66 2RL
T 0121 558 8921
F 0121 565 1354
E sales@ashlacyperf.co.uk

